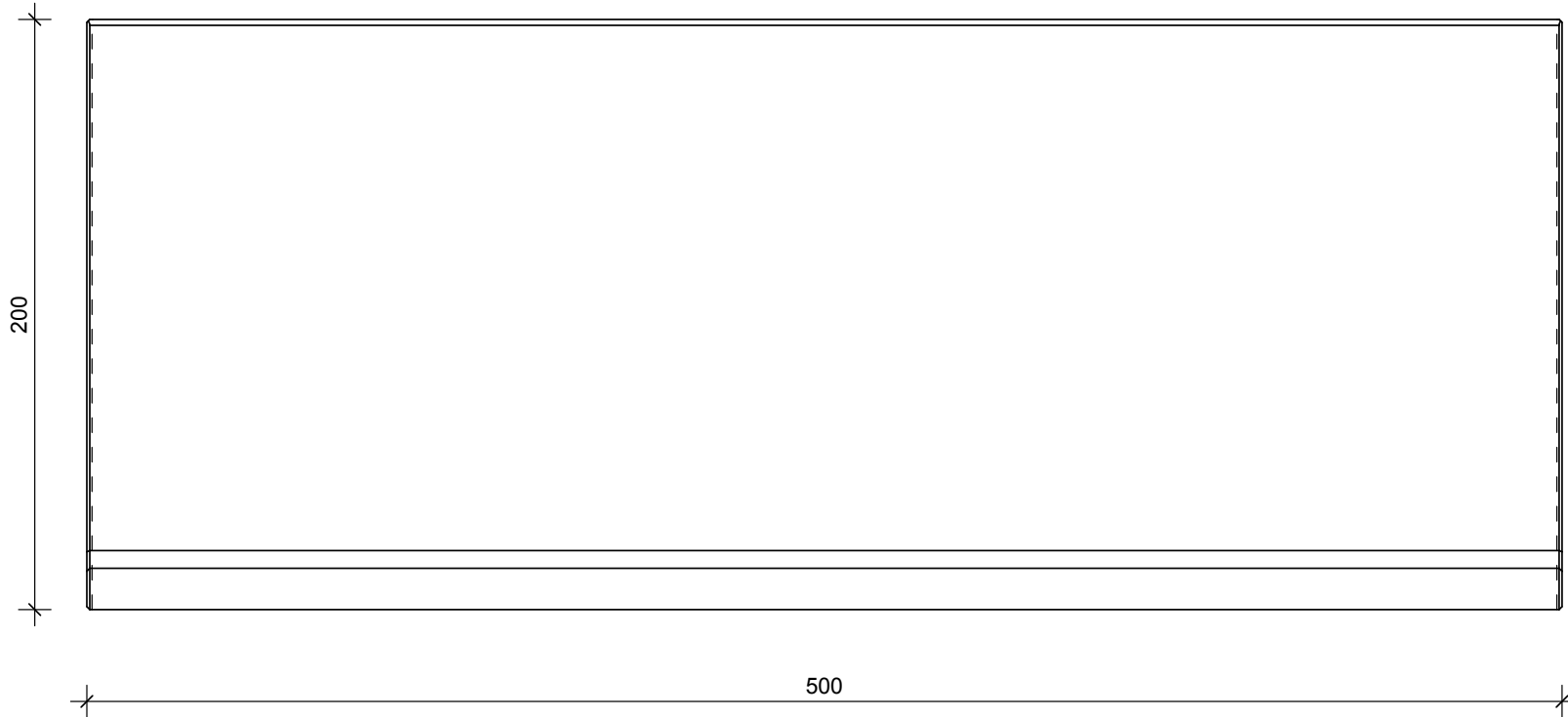
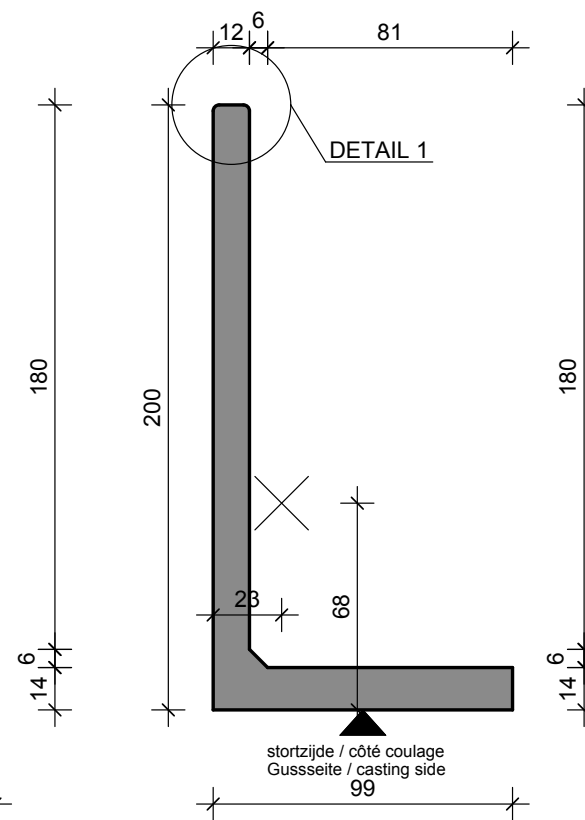


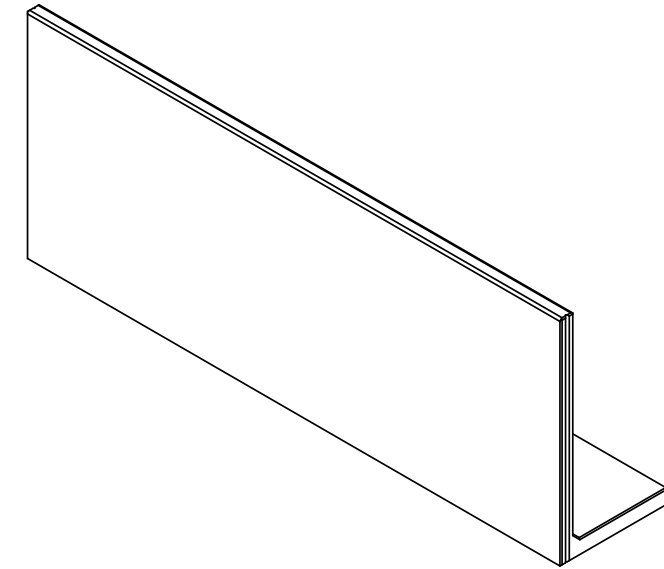
VOORAANZICHT - VUE FRONTALE  
VORDERANSICHT - FRONT VIEW



DOORSNEDE - COUPE TRANSVERSALE  
QUERSCHNITT - CROSS SECTION



3D



Opmerking:  
Betonmaten in cm. Overige maten in mm.



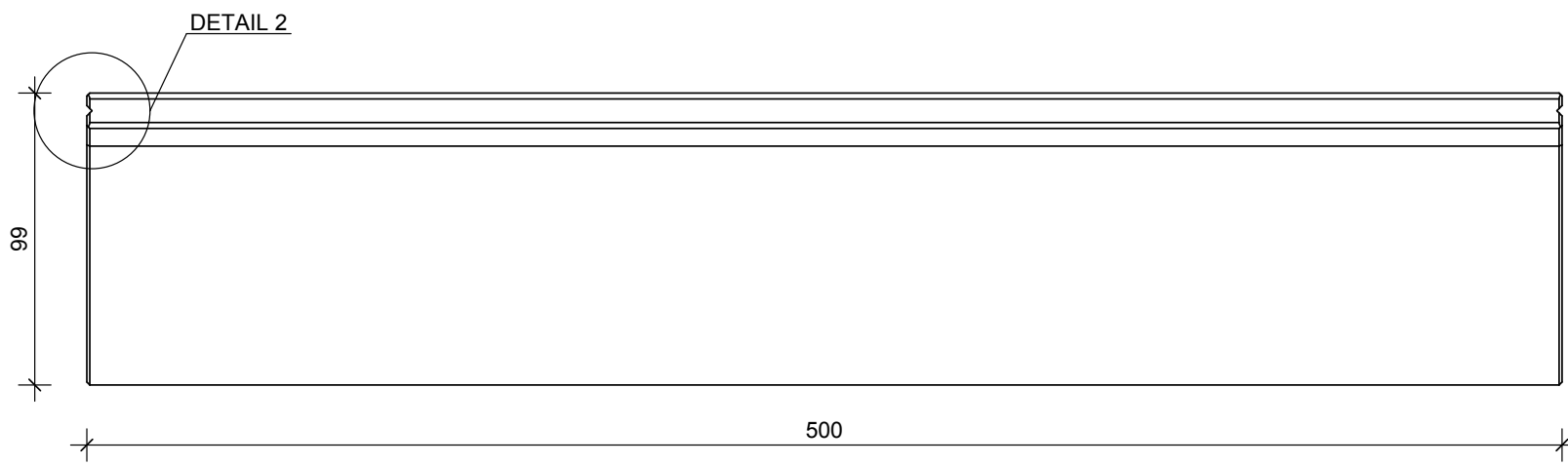
WAPENING / FERRAILLAGE  
BEWEHRUNG / REINFORCEMENT

CLF12G 200x500

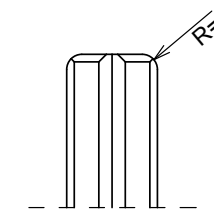
sterkteklasse / classe de résistance Festigkeitsklasse / strength class	C40/50
sterkte bij levering / résistance lors de la livraison Festigkeit bei Lieferung / strength at delivery	/
betondekking / enrobage de béton Betondeckung / concrete cover	30mm
milieuklasse / classe d'exposition Expositionklasse / exposure class (EN 206)	XC4, XF1, XA3
constructieklasse / classe structurale structural class	S1
staalkwaliteit / qualité de l'acier Stahlgüte / steel quality	B500B

artikelnr. / numéro d'article Artikelnr. / item number	11597
versie / version Version / version	20180427
productie / production Herstellung / production	Emmen / Wielsbeke
volumen / volume Volumen / volume	1.8153 m <sup>3</sup>
gewicht / poids Gewicht / weight	4447 kg
ankers / ankers Anker	RTA: 2x 1,25T-120MM KKA: 2x 2,5T-120MM

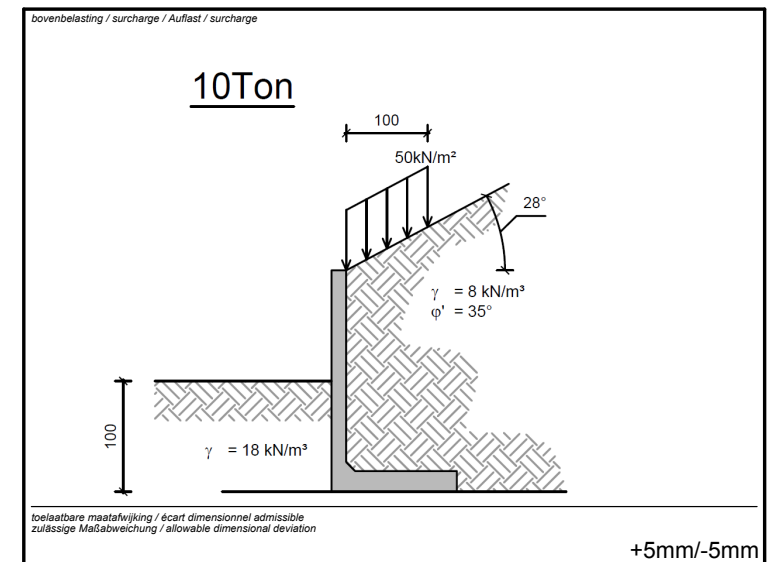
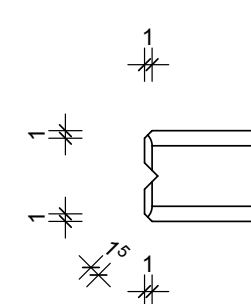
BOVENAANZICHT - VUE SUPERIEURE  
DRAUFSICHT - TOP VIEW



DETAIL 1



DETAIL 2



MBS & CBS Beton BV  
Phileas Foggstraat 24D  
NL-7825 AK Emmen

Tel. +31 05 91 742 010

info@mbs-cbsbeton.nl  
www.mbs-cbsbeton.nl