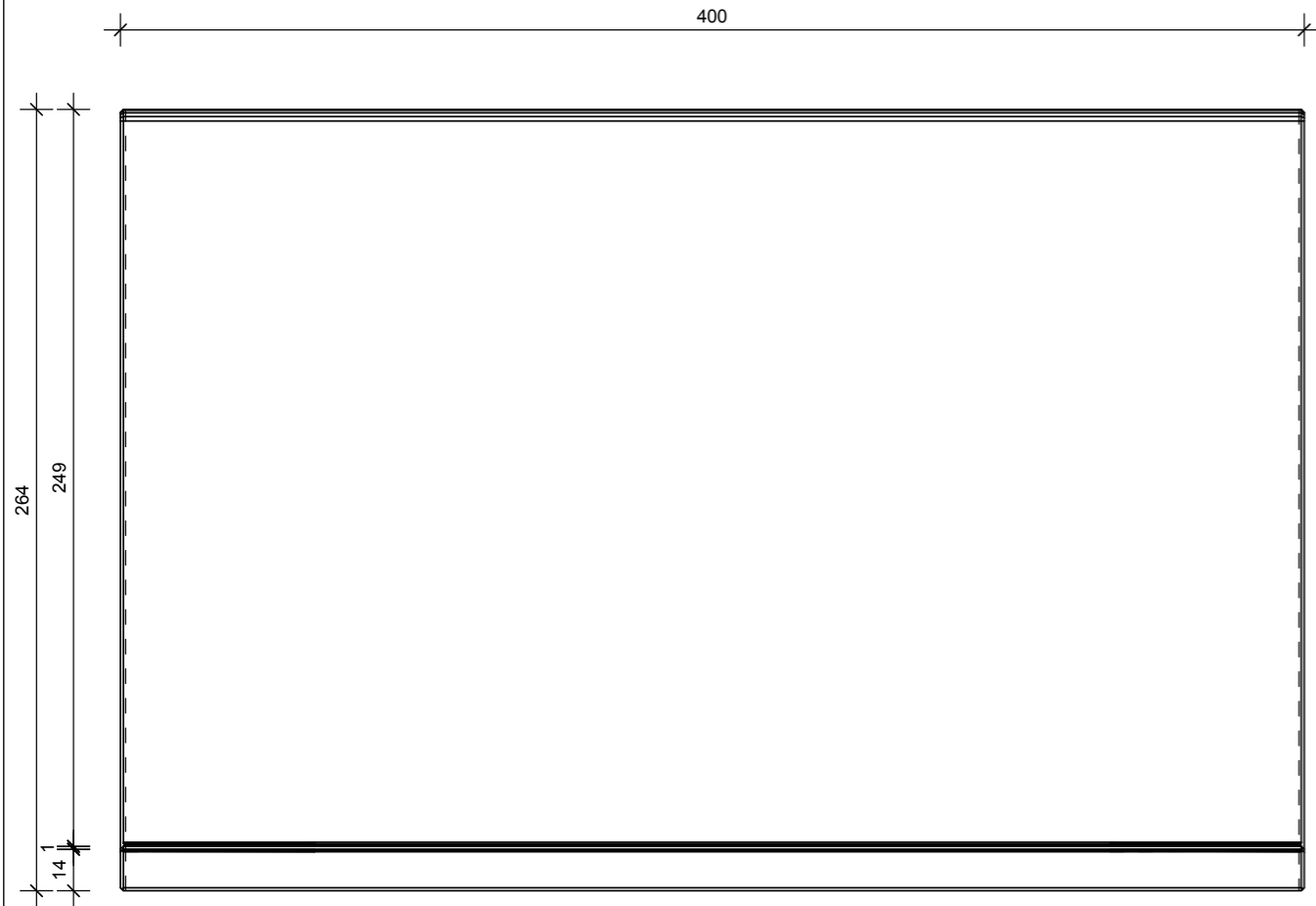
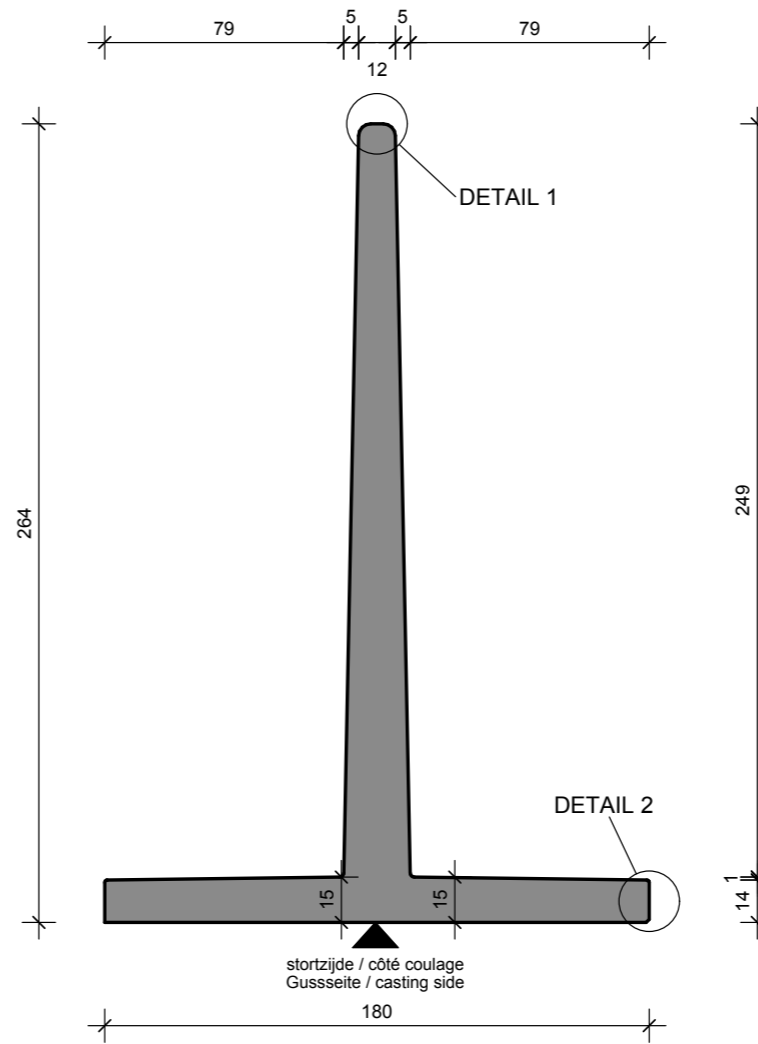


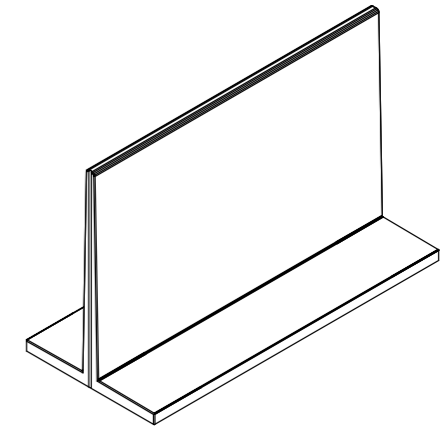
VOORAANZICHT - VUE FRONTALE  
VORDERANSICHT - FRONT VIEW



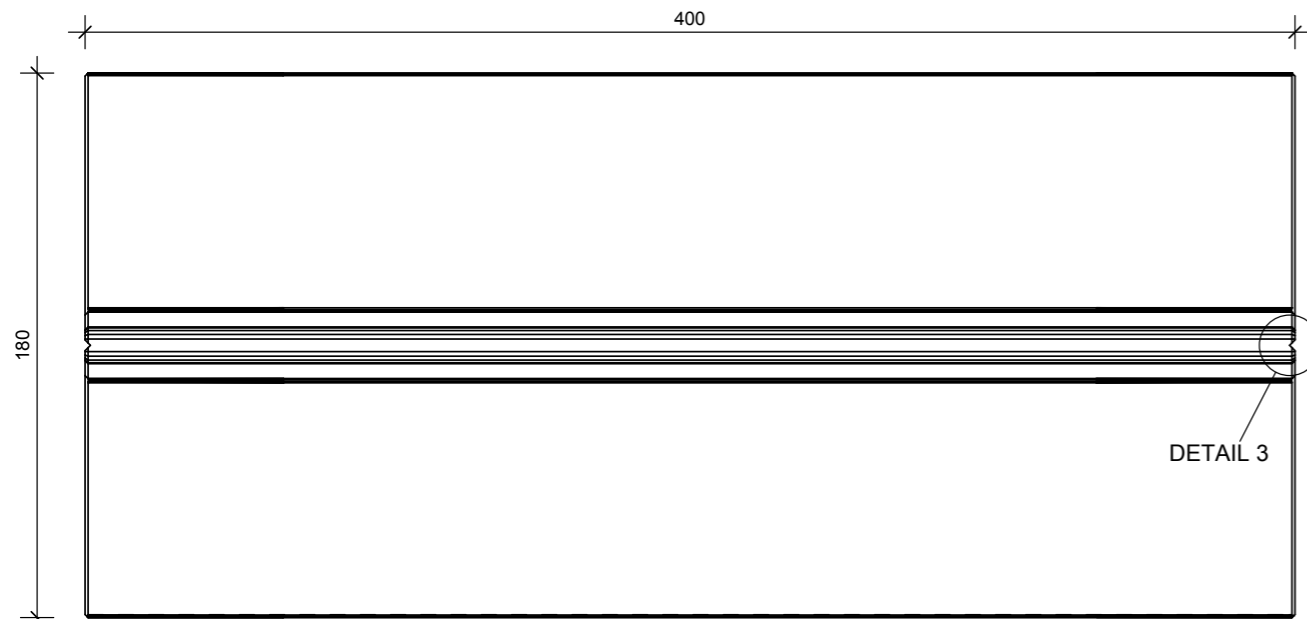
DOORSNEDE - COUPE TRANSVERSALE  
QUERSCHNITT - CROSS SECTION



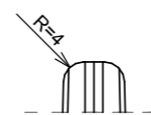
3D



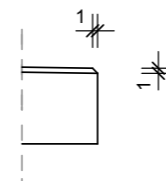
BOVENAANZICHT - VUE SUPERIEURE  
DRAUFSICHT - TOP VIEW



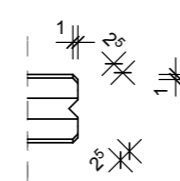
DETAIL 1



DETAIL 2



DETAIL 3

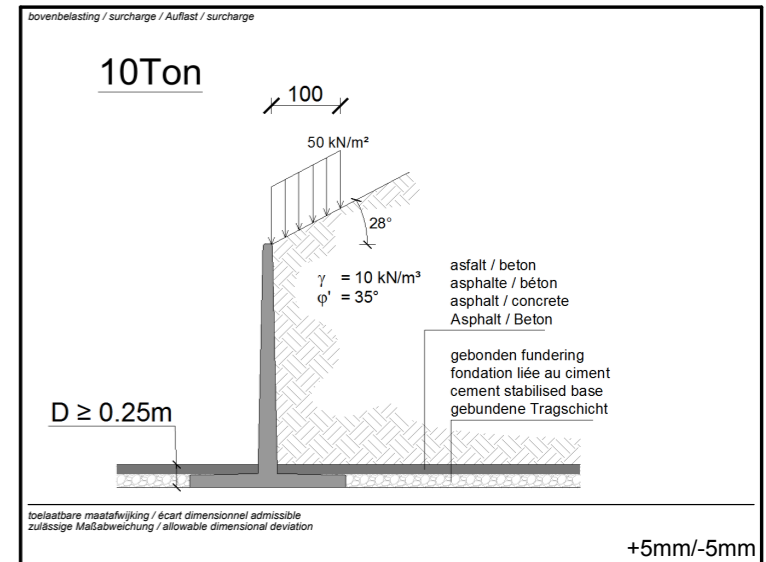


TECHNISCHE FICHE / FICHE TECHNIQUE  
TECHNISCHE DATEN / TECHNICAL DATA

element / élément / Element / element

CTAGRI 264x400

sterkteklasse / classe de résistance Festigkeitsklasse / strength class	C60/75	artikelnr. / numéro d'article Article nr. / item number	10382
sterkte bij levering / résistance lors de la livraison Festigkeit bei Lieferung / strength at delivery	/	verse / version Version / version	20190716
betondekking / enrobage de béton Betondeckung / concrete cover	30mm	productie / production Herstellung / production	Emmen
milieuklasse / classe d'exposition Expositionklasse / exposure class (EN 206)	XC4, XF1, XA3	volumen / volume Volumen / volume	2.78 m <sup>3</sup>
constructieklasse / classe structurale structural class	S1	gewicht / poids Gewicht / weight	6821 kg
staalkwaliteit / qualité de l'acier Stahlgüte / steel quality	B500B	ankers / ancrages Anker / anchors	RTA: / KKA: /



MBS & CBS Beton BV  
Phileas Foggstraat 24D  
NL-7825 AK Emmen

Tel. +31 05 91 742 010

info@mbs-cbsbeton.nl  
www.mbs-cbsbeton.nl